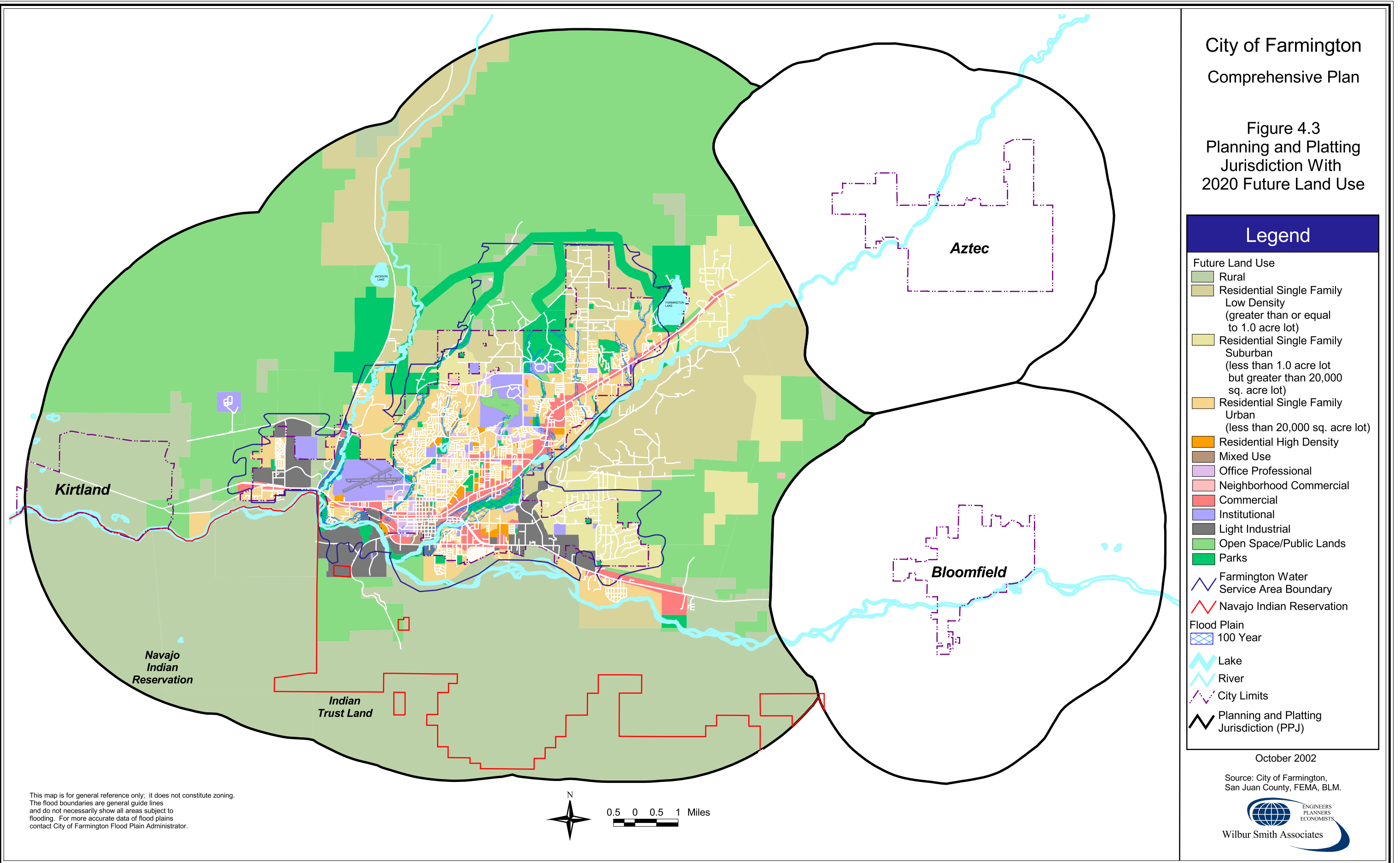


City of Farmington  
Comprehensive Plan

Figure 4.3  
Planning and Platting  
Jurisdiction With  
2020 Future Land Use



October 2002

Source: City of Farmington,  
San Juan County, FEMA, BLM.



This map is for general reference only; it does not constitute zoning. The flood boundaries are general guide lines and do not necessarily show all areas subject to flooding. For more accurate data of flood plains contact City of Farmington Flood Plain Administrator.

