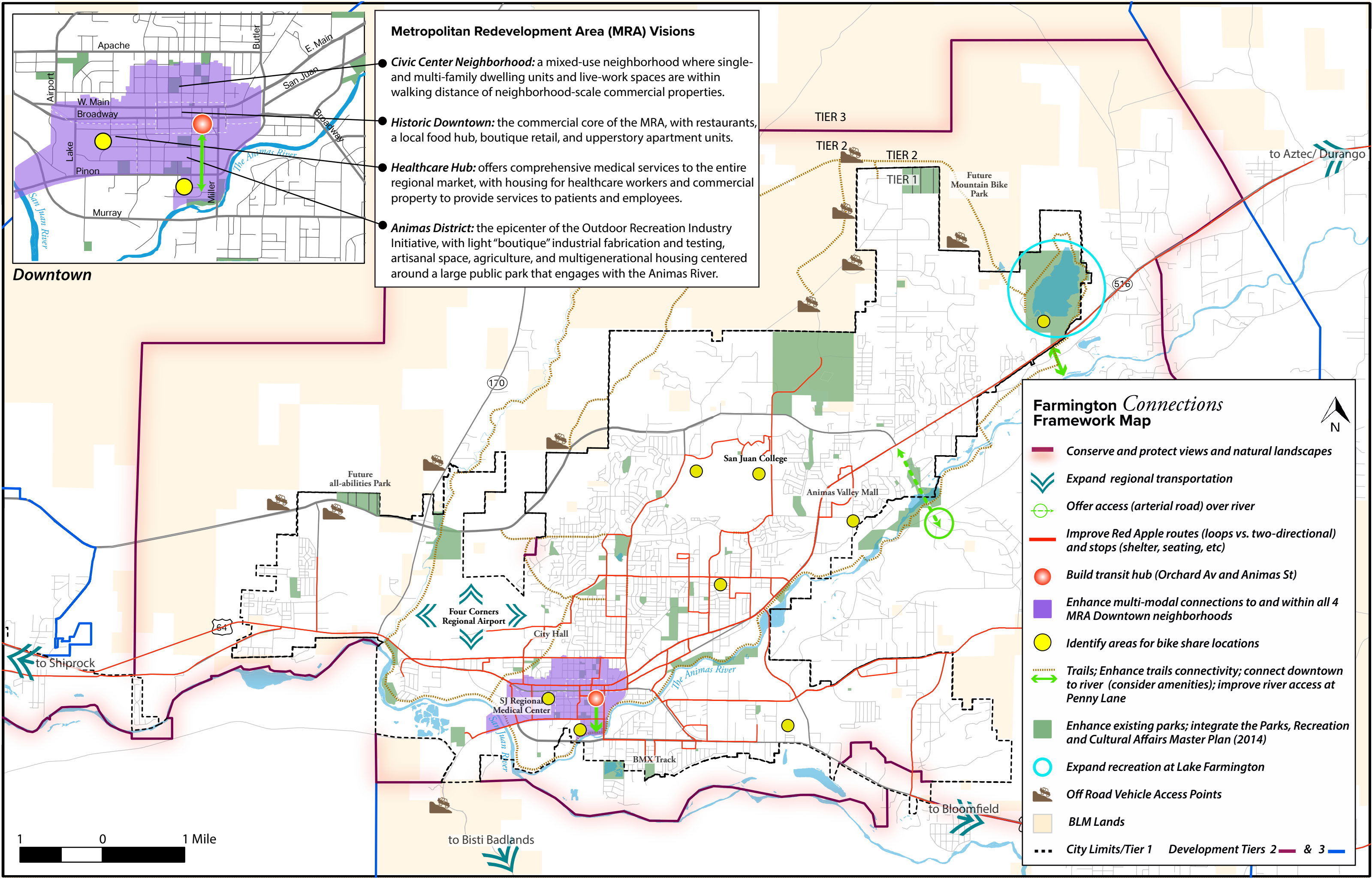


Downtown

Metropolitan Redevelopment Area (MRA) Visions

- **Civic Center Neighborhood:** a mixed-use neighborhood where single- and multi-family dwelling units and live-work spaces are within walking distance of neighborhood-scale commercial properties.
- **Historic Downtown:** the commercial core of the MRA, with restaurants, a local food hub, boutique retail, and upperstory apartment units.
- **Healthcare Hub:** offers comprehensive medical services to the entire regional market, with housing for healthcare workers and commercial property to provide services to patients and employees.
- **Animas District:** the epicenter of the Outdoor Recreation Industry Initiative, with light “boutique” industrial fabrication and testing, artisanal space, agriculture, and multigenerational housing centered around a large public park that engages with the Animas River.



Farmington Connections Framework Map

- Conserve and protect views and natural landscapes
- ≡ Expand regional transportation
- ⊕ Offer access (arterial road) over river
- Improve Red Apple routes (loops vs. two-directional) and stops (shelter, seating, etc)
- Build transit hub (Orchard Av and Animas St)
- Enhance multi-modal connections to and within all 4 MRA Downtown neighborhoods
- Identify areas for bike share locations
- ⋯ Trails; Enhance trails connectivity; connect downtown to river (consider amenities); improve river access at Penny Lane
- Enhance existing parks; integrate the Parks, Recreation and Cultural Affairs Master Plan (2014)
- Expand recreation at Lake Farmington
- 🚗 Off Road Vehicle Access Points
- BLM Lands
- ⋯ City Limits/Tier 1 Development Tiers 2 & 3

