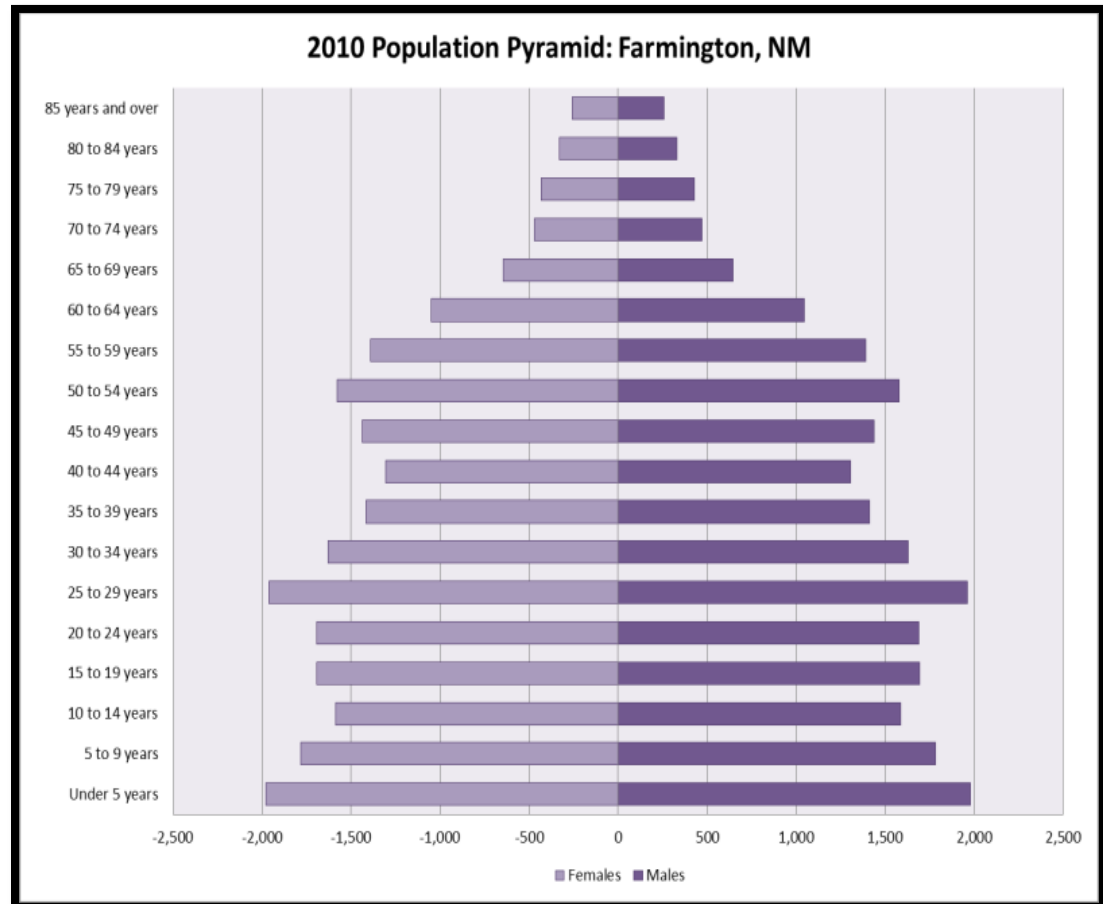


2 | Existing Conditions & Trends

2.1 BACKGROUND

Planning for the horizon year of 2040 requires an understanding of our region's population composition, economic drivers, housing construct, area income and transportation assets. These demographics indicators need to be examined in context with multi-generational demands in transportation planning regionally and nationwide. At the national scale, it is estimated that by 2040 those over the age of sixty-five years will make up 20 percent of the entire population. In addition, those under the age of eighteen will make up almost 23 percent of the population. Together they will comprise forty-three percent of the US population. Results of a 2012 national poll conducted by the American Planning Association (APA) revealed common concerns among millennials and baby boomers regarding desirable community attributes and prosperous economies. Taken together, these demographic changes require that the MPO approach future planning that is able to respond to regional needs which also simultaneously allow for the integration best practices following national trends.



In 2015, almost 100,000 people live in the Farmington MPO region, and over 45,000 people work here. By the year 2040, an additional 40,000 people are expected to live in the region, and an additional 20,000 employed.

2.2 POPULATION

The Farmington MPO region has grown even more rapidly than the county itself, increasing its share of County population from 63% in 1980 to 74% in 2010, the base year for this plan update. The MPO staff and Technical Committee looked at local land use plans and infrastructure in place, and extrapolated this population trend, estimating the region's share will grow moderately to approximately 79% of the County's population by 2040. The MPO Policy Committee concurred with this estimate, which would result in the MPO region's 2010 population of 96,925 growing to 119,316 in 2025 and 138,505 in 2040.

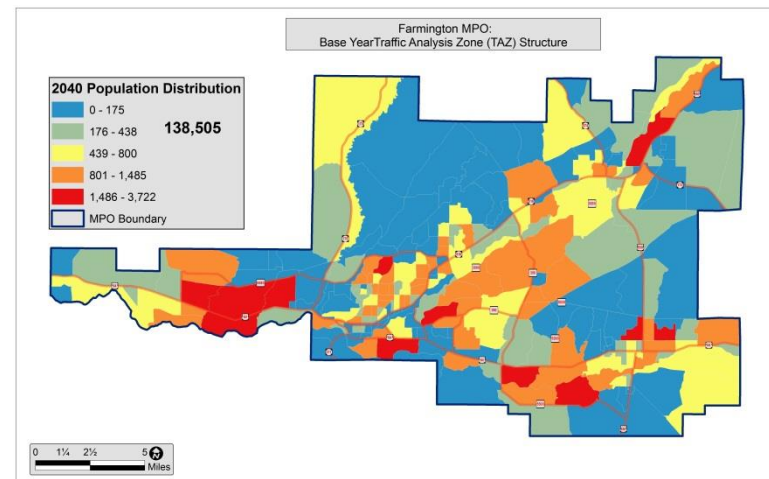
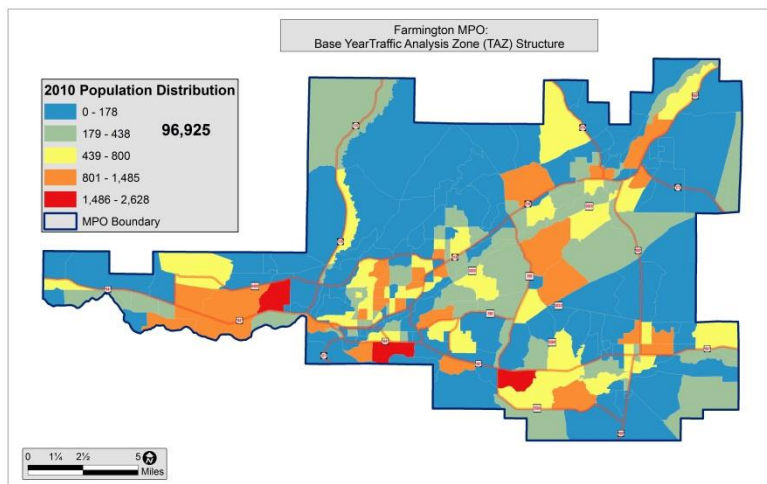
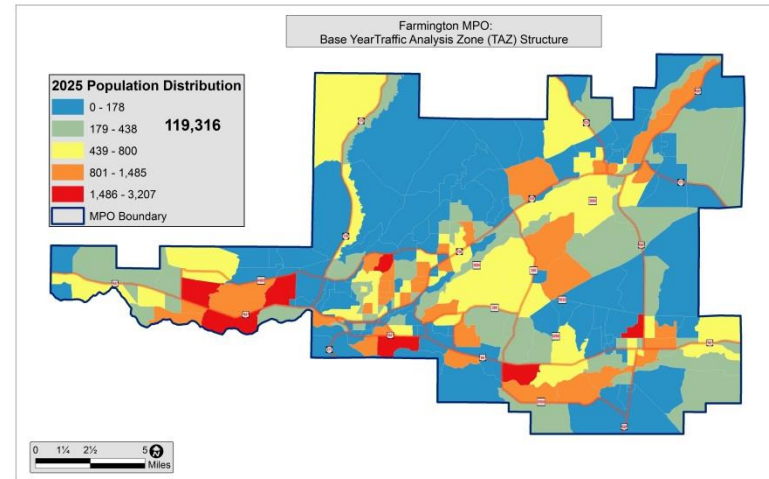


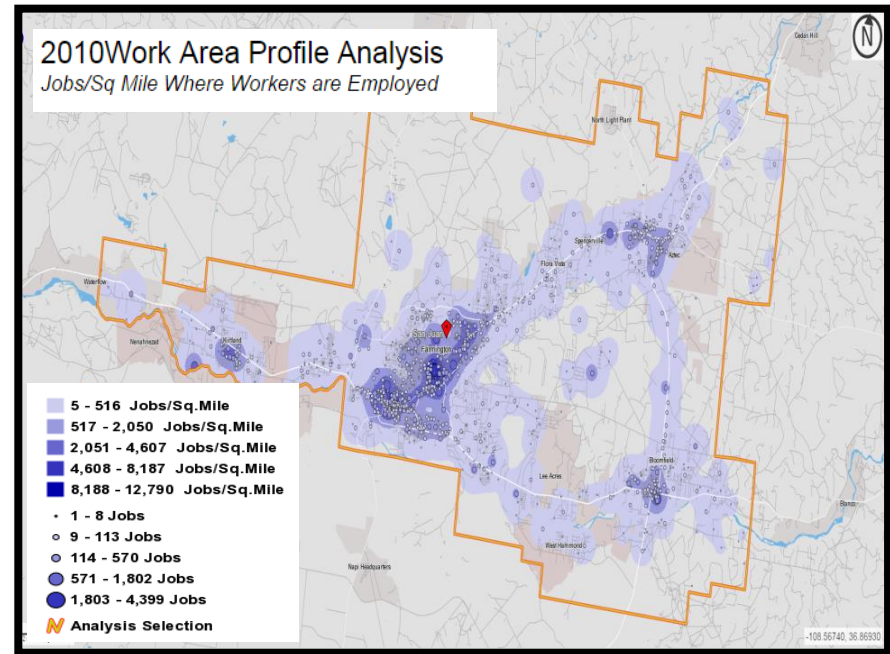
TABLE 2-1 – Future Population Growth

Jurisdiction	2010 Population	2020 Population	2025 Population	2030 Population	2040 Population
Aztec	6,763	7,235	7,732	8,039	8,546
Bloomfield	8,112	8,497	9,331	9,314	9,612
Farmington	45,877	47,323	51,043	51,441	54,086
Kirtland	7,875	9,006	10,404	11,270	12,881
San Juan County (within the MPO)	28,298	34,020	40,806	46,140	53,380
MPO Total	98,925	106,081	119,316	126,204	138,505
San Juan County (whole county)	130,170	146,388	154,065	161,593	176,678

2.3 EMPLOYMENT TRENDS

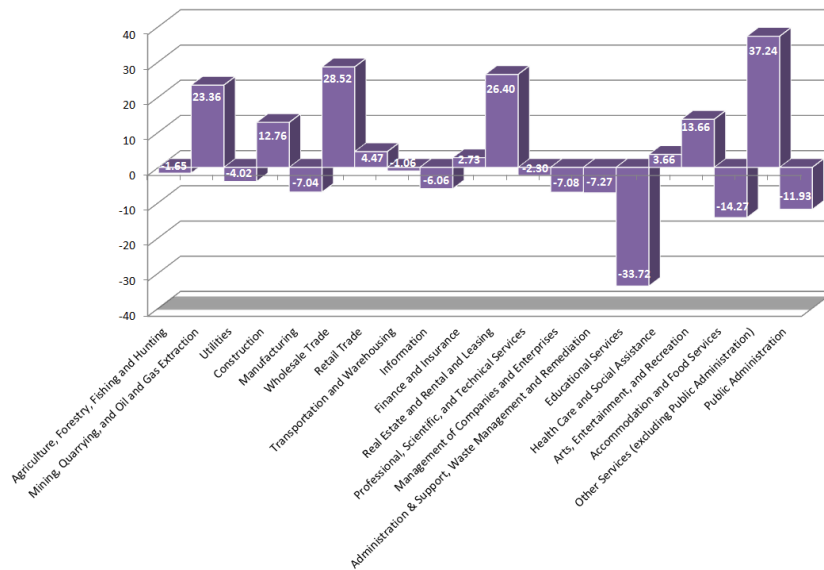
Employment typically changes more readily than population. Since 1996, there have been between 39,000 and 51,000 jobs counted in San Juan County by the US Census Bureau’s Quarterly Workforce Indicators (QWI). In 2011, the most recent year for which reports were available, there were 47,000 jobs in San Juan County, while New Mexico Workforce Solutions estimates there will be 55,650 jobs in the County by 2020.

The Census Bureau’s On the Map tool, illustrates employment hot spots concentrated in Farmington in and around 20th Street and E. Main. Other pockets include areas along S. Main Street in Aztec, as well as commercial corridors along US 64 in Bloomfield and Kirtland to the west. Other indicators show that from 2002-2010 the positive growth industries in the MPO were in Other Services (37%), Wholesale Trade (28%), Real Estate (26%), Oil & Gas Extraction (23%) and Arts Entertainment & Recreation (14%). Education Services (-33.72%), Accommodation & Food Services

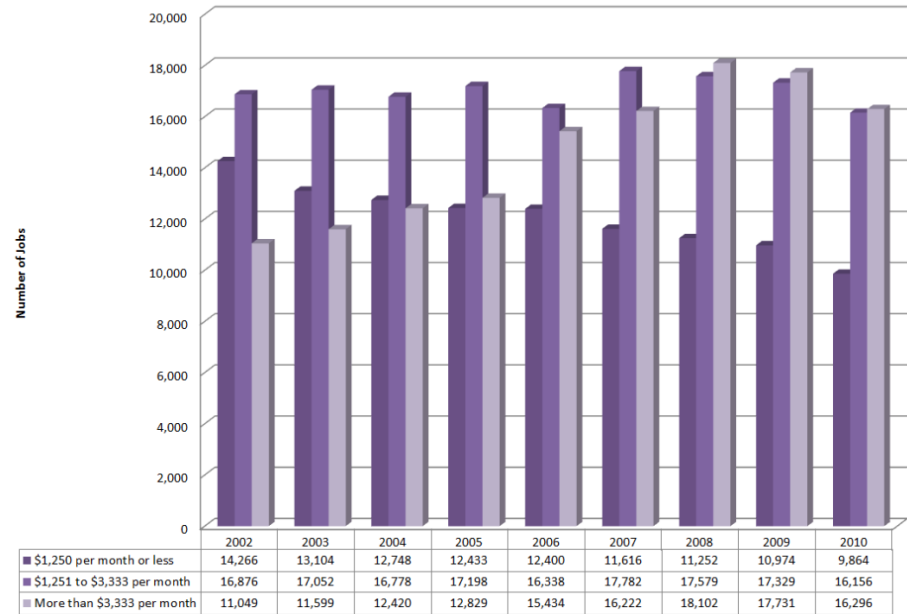


(-14.27%) and Public Administration (-11.93%) experienced negative growth rates during the same time period.

Percent Change in Employment (NAICS) 2002-2010: Farmington MPO



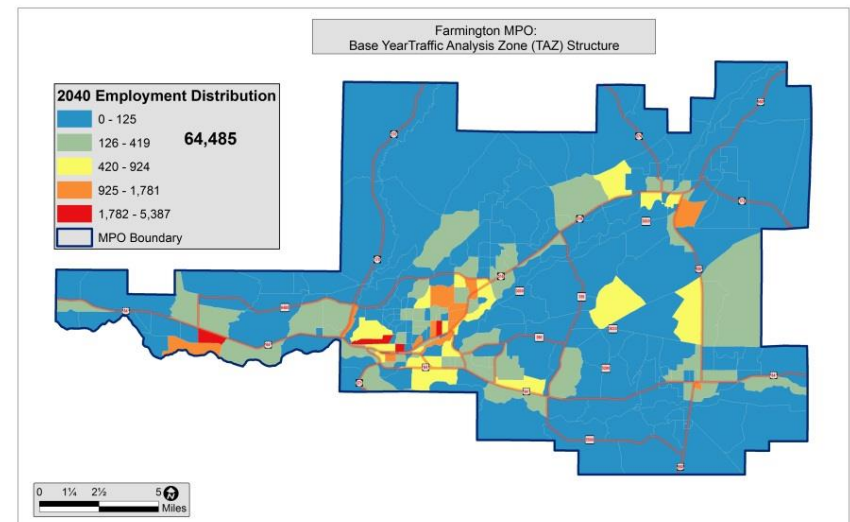
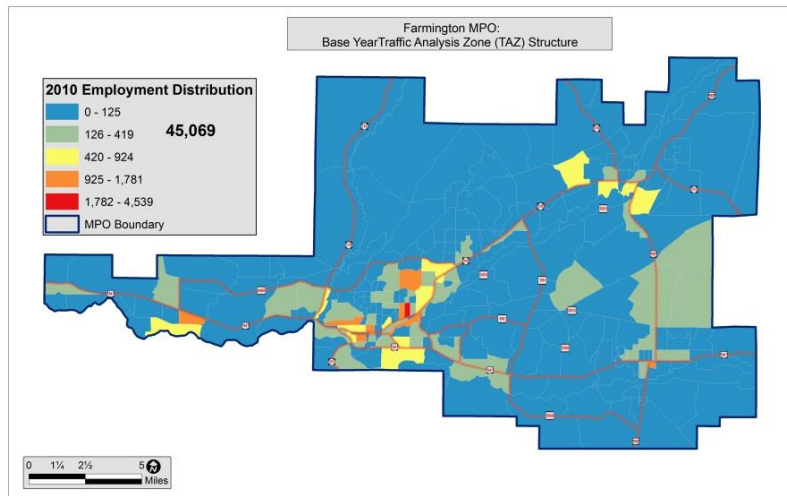
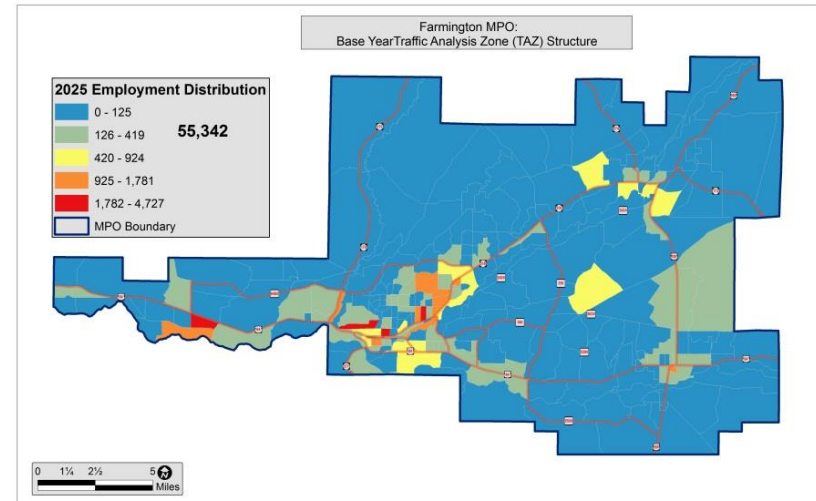
Earnings in the Farmington MPO Planning Area: 2002-2010



Wages and earnings play a large role in attracting talent and professionals to the region. A study of a 2010 Census age and sex Population pyramid reveals that the largest age cohort in the MPO planning area those 25-29 years. The oil and gas industry which acts as the economic base is a large contributor to those seeking good wages in the area. Other Census data revealed that from 2002-2010, those earning more \$3,333 per month increased steadily over this time period in relation to the total number of jobs in the region. The same data reveals that those earning less than \$1,250 saw a steady decrease from 2002-2010, while those earning between \$1,250 and \$3,333 a month remained relatively constant. Overall there was an increase in monthly earnings amongst all those employed between the years of 2002-2012.

2.4 CURRENT and FUTURE EMPLOYMENT

Three employment scenarios were considered based on these trends—no growth, moderate growth and rapid growth. The moderate growth projection was chosen by the MPO Technical Committee for further analysis. In contrast to population, the MPO region has accounted for 97%-91% County employment in recent years, which when extrapolated seems likely to remain stable between 92% and 94%. With these assumptions, the MPO region's employment would grow from 45,069 in 2010 to 55,342 in 2025 and 64,485 in 2040.



The Farmington Metropolitan Planning Organization statistically accounts for approximately 85 percent of the County’s economic production.

TABLE 2-2 – Future Employment Growth

Jurisdiction	2010 Employment	2020 Employment	2025 Employment	2030 Employment	2040 Employment
Aztec	2,889	3,205	3,520	3,832	4,144
Bloomfield	3,035	3,450	3,864	4,257	4,649
Farmington	30,618	34,807	37,122	40,778	42,651
Kirtland	3,125	3,453	3,780	4,116	4,452
San Juan County (within the MPO)	5,389	6,623	7,056	7,823	8,589
MPO Total	45,069	52,329	55,342	58,380	64,485
San Juan County (whole county)	47,648	56,331	59,340	62,799	69,716

2.5 VISUM TRAVEL DEMAND MODELING

These population and employment figures are used in travel demand modeling software (VISUM) in a Geographic Information System (GIS) to forecast future travel patterns. The model maps employment, households and land use by areas called Traffic Analysis Zones (TAZ). A base layer was built in the GIS from San Juan County Assessor’s Office parcel data to accurately account for current land use patterns and allocate population from Census Tracts to each TAZ. Staff

then analyzed potential future changes by meeting with local stakeholders and discussing land use plans. Three model runs were then performed for the 2010 base year, and 2025 and 2040 forecast years. The MPO used these model runs to identify future roads in Chapter 5.